

Tumor Marker

CEA

- Short incubation time: (90 min. at RT)
- Standard range: 5 - 100 ng/ml
- Sensitivity: ≤ 0.596 ng/ml

CA 15-3

- Standard range: 25 - 200 u/ml
- Short incubation time: (45 min. at RT)
- No Sample Dilution

TPS

- Standard range: 30 - 1200 u/ml
- Incubation time: 3 h/30 min. or 2 h/15 min. on a shaker

TPA

- Standard range: 1 - 15 ng/ml
- Incubation time: 3 h/30/15 min. or 2 h/30/15 min. on a shaker
- Sensitivity: 0.1 ng/ml

β -HCG

- Standard range: 5 - 200 mIU/ml
- Incubation time: 75 min.
- Sensitivity: < 1 mIU/ml

Afamin

New

Novel protein marker for ovarian and testicular cancer.
Improved predictivity when combined in patients with CA125 > 5 U/ml.
Sensitivity $> 70\%$ for TC (testicular cancer).
Significantly reduced Afamin plasma concentrations in pre-operative TC patients.
Predictive for all species of TC, replaces at least 2 conventional markers.

- Standard range: 0 - 100 μ g/ml
- Incubation time: 60/30/15 min

AFP

- Standard range: 10 - 160 mIU/ml
- Short Incubation time: (40 min. at RT)
- Sensitivity: ≤ 0.3 mg/l

CA 125

- Short incubation time: (60 min. at RT)
- Standard range: 15 - 500 u/ml

CA 72-4

- Sensitivity: < 0.31 u/ml
- Standard range: 3 - 100 u/ml

SCC

Squamous cell carcinoma antigen (SCCA) is serological marker for squamous cell carcinomas of the cervix, lung, head and neck, vulva and oesophagus.
In cervical cancer, SCCA serum levels have been shown to correlate to tumor stage, tumor size and residual tumor after treatment.

- Standard range: 1 - 50 ng/ml
- Incubation time: 60/30 min.

SI00B

- Standard range: 50 - 2000 pg/ml
- Sensitivity: 5 pg/ml

PSA equimolar

- Standard range: 1 - 60 μ g/l
- Sensitivity: ≤ 0.1 μ g/l
- Exc. correlation

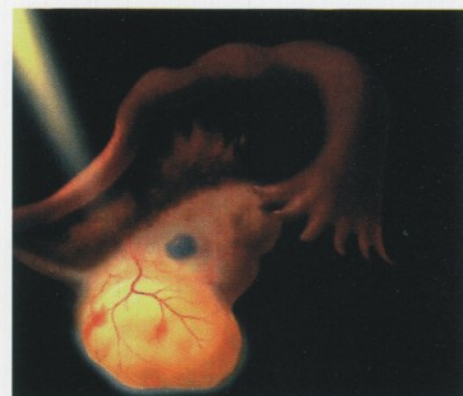
Free PSA

- Sensitivity: ≤ 0.05 μ g/l
- Standard range: 1 - 30 μ g/l
- Highly specific

UBC

For diagnosis of Urinary Bladder Cancer

- Sensitivity: 0.1 μ g/L
- Standard range: 1-15 μ g/L
- Incubation time: 120/15 min.



NSE

For determination of Neuron Specific Enolase (NSE)

- Results within: 2 h, one step procedure
- Measuring range: 1 - 130 μ g/L

CYFRA 21-1

- Short incubation time: 1 h
- Standard range: 25 - 500 u/ml

Chromogranin A

For diagnosis and monitoring of patients with carcinoid tumours, islet cell tumours, pheochromocytoma, neuroblastoma, and other tumours of neuroendocrine origin.

- Standard range: 31 - 830 ng/ml
- Incubation time: 200 min.

HPV IgG

New

Determination of IgG Ab's to HPV (type 6, 11, 16 and 18)
The HPV IgG ELISA is intended for the follow-up of patients administered with the vaccines based on L1VLPs (Virus like particles) coming from Human Papilloma Virus Type 6, 11, 16 and 18.

- Cut off calculation, serum based
- Incubation time: 60/60/20 min

L1CAM

New

(L1 cell adhesion molecule)
Pathogenetic factor in Endometriosis
L1CAM is over expressed in ovarian and endometrial carcinomas and is associated with a bad prognosis. L1CAM expression is higher in atypical endometriosis.
Women with atypical endometriosis have a higher probability for developing ovarian cancer.

- Standard range: 0 - 140 ng/ml
- Incubation time: 60/60/30/15 min